

General Safety Instructions

- Ensure the Handrail is fitted at all times.
- Do not use the Top Flyte Safety Stair until both top and bottom fittings have been anchored to the main building structure.
- Do not exceed the **152kg weight limit** on this unit at any time unless the optional *Top Flyte Safety Stair Brace* is fitted (TSF30 or TSF36 models only), in which case weight loading can be up to 200kg.
- Do not allow more than **one person** on the Safety Stair at one time.
- Avoid using the stair where there is a risk to personnel from overloading or overhead activity.
- Do not use the stair to transport heavy or bulky materials between levels.
- Do not use the Top Flyte Safety Stair where structural damage to any rail or step occurs or



CONGRATULATIONS ON YOUR PURCHASE OF A TOP FLYTE SAFETY STAIR

This product has been developed to provide safe access to upper floors of construction sites, and has a 5 year warranty against defective materials or workmanship.

Manufactured from high grade, quality aluminium, the Top Flyte Safety Stair is designed to save time, energy and effort.

Maintenance:

- All components must be checked regularly for damage such as dents, cracks, buckling and the like. If found, the Safety Stair must not be used. Damaged components are easily replaced and must be done so before further use. Contact your supplier or Top Flyte Safety Stairs.



Phone 07 578 1414 • Fax 07 578 1415
8 Cypress St, Tauranga • Freephone 0800 333 471
PO Box 2505, Tauranga 3015, New Zealand



Product Safety and Installation Information

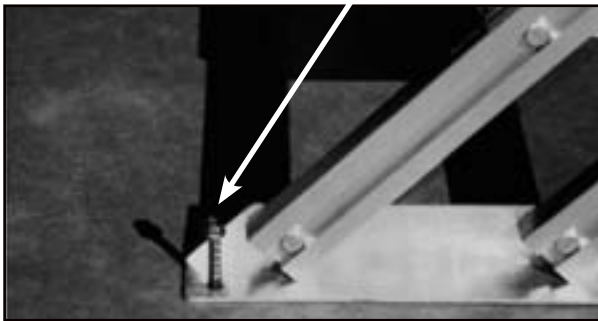
TOP MOUNTING

2400 - 2750mm Height

1. Lift and Position the Stair Unit so that the top plate is flush with the top of the building structure and stabilize the unit before fixing.
2. Secure the top tread plate to the building structure using the appropriate fixing method.



3. Position the bottom end of the Safety Stair to achieve an angle of between 40° - 45°.
4. Fix the bottom end plate to the floor using the appropriate fixing method.



5. Fix handrail in correct position and securely fasten to the Stair Unit. Ensure bolts are tightened.

SAFETY STAIR INSTALLATION

Please observe the following steps when installing your Top Flyte Safety Stair on a new or existing site.

- Ensure the site area is clean and clear of debris before starting.
- Always use two persons to lift and secure the safety stair in place.
- Do not alter or modify the stair. Doing so will nullify the 5 year warranty.
- Ensure both top and bottom plates are securely fixed to the main building structure before use.
- Ensure the Handrail is securely attached and bolts are firmly tightened.
- Inspect the Safety Stair immediately it is received, & immediately before using it wherever it is set up. Never use a damaged, bent or broken Safety Stair.
- Inspect all welds to ensure there are no cracks.
- At all times the steps must be clean and dry, and free from grease, oil, mud, paint & anything that is slippery or dangerous.

Fixing Methods

Always use the appropriate fixing method for the site:

- **Wooden Structures:**

Use heavy duty Tec screws or coach bolts to fix the top and bottom plates.

- **Concrete Structures:**

Use concrete bolts or ramset fittings.

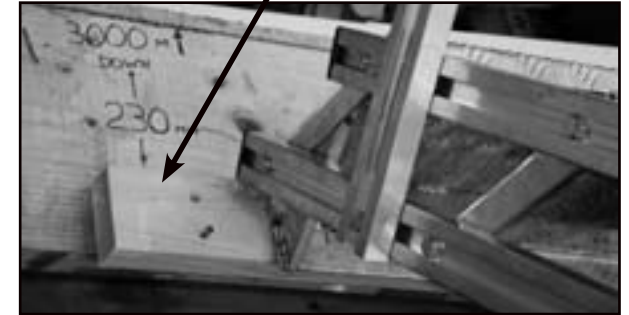
- **Aluminium or Steel Plate Platforms:**

Use Compatible bolts.

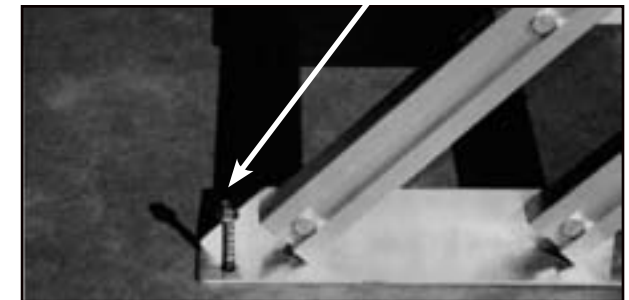
FACE MOUNTING

3000mm Height

1. Fix a timber packer to face of joist or wall using 90 x 45 x 750 (min) finished timber or larger positioned 230mm below the top of the floor as shown.



2. Lift the stair unit into position and stabilise before fixing.
3. Secure the top tread plate to the packer.
4. Position the bottom end of the Safety Stair to achieve an angle of between 40° - 45°.
5. Fix the bottom end plate to the floor using the appropriate fixing method.



6. Fit handrail in correct position and securely fasten to the Stair Unit. Ensure bolts are tightened.